



Getting Started with Osmo Costume Party

Updated 09.24.19
Version 1.0.0

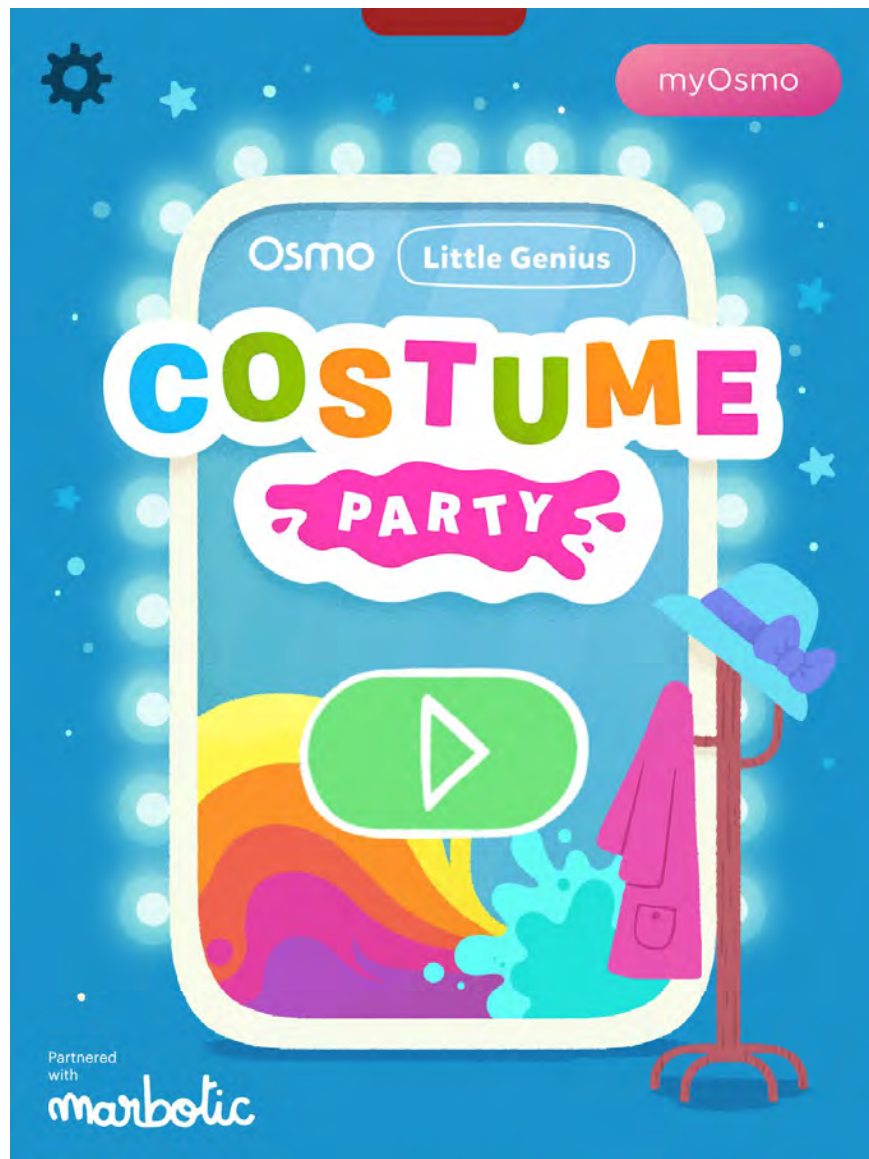


Table of Contents

What's Included?	3
Main Menu Navigation	4
Game Setup	5
Playing the Game	6
Best Practices for Effective Osmo Detection	9
Other Questions	9



What's Included?

To play Osmo Costume Party, you'll need the following items from the Osmo Little Genius Starter Kit.

Osmo Base



Character Board



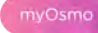
Costume Pieces



18 pieces total: 6 hair styles, 6 bodies, 6 feet.

Main Menu Navigation


Accessing your myOsmo Account

Tap  (or your avatar, if you're already logged in) in the upper right corner to view the myOsmo account screen. See this [guide to myOsmo accounts and profiles](#) for more information.



Language

The default language automatically selects based on the default language setting of your device. Costume Party is currently offered in English (US), English (UK), French, and Dutch.

Start Playing

Tap  to start playing Costume Party.

Returning to the Main Menu

From any screen, tap  to bring up the Settings menu. Next tap  to return to the Main Menu.

Music


Turn the background music on or off.

Resetting Progress

Tap  in the upper left corner and tap 'Reset Progress'. Be careful! All progress will be lost and reset.

Game Setup

To get started, grab your Osmo Base, Character Board, and Costume Pieces!

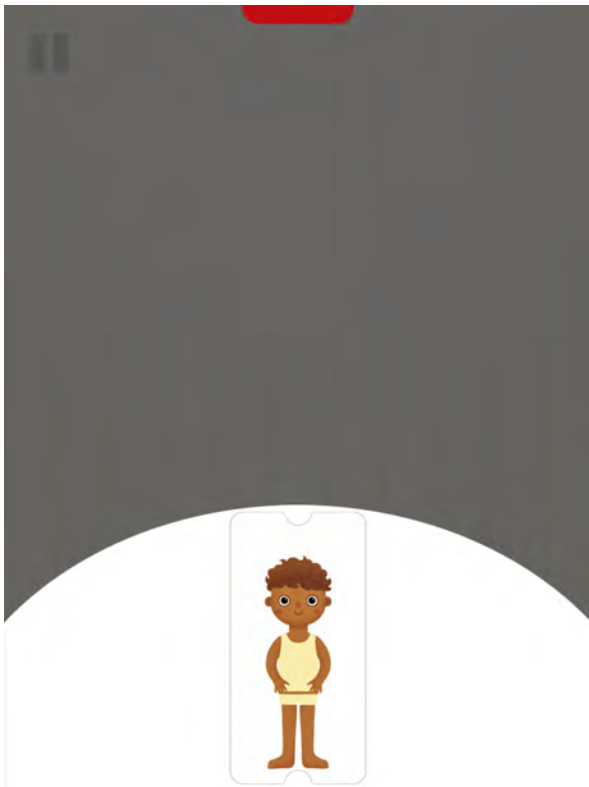
1. Set up your tablet device in your Osmo Base. Make sure you have the Osmo Costume Party game app installed and ready to play.
2. Remove your Character Board and Costume Pieces from the stackable container. Set them aside within easy reach.
3. Tap  on the Main Menu to begin the game.



Playing the Game

When you start playing Costume Party, you'll see a prompt asking you to place your Character Board in front of your base. If your Character Board is already in place, you'll be able to skip this prompt and start playing right away!

When the game begins, you'll see your character standing on screen, looking for help to get dressed up for the party. The first Costume Piece they want to wear will be in the top right corner of the screen, along with the color they'd like it to be.



Place a Costume Piece on the Character Board to have it appear on screen!

To color a Costume Piece, press the paintbrush that is the color you want to use, then press the piece you want to color.

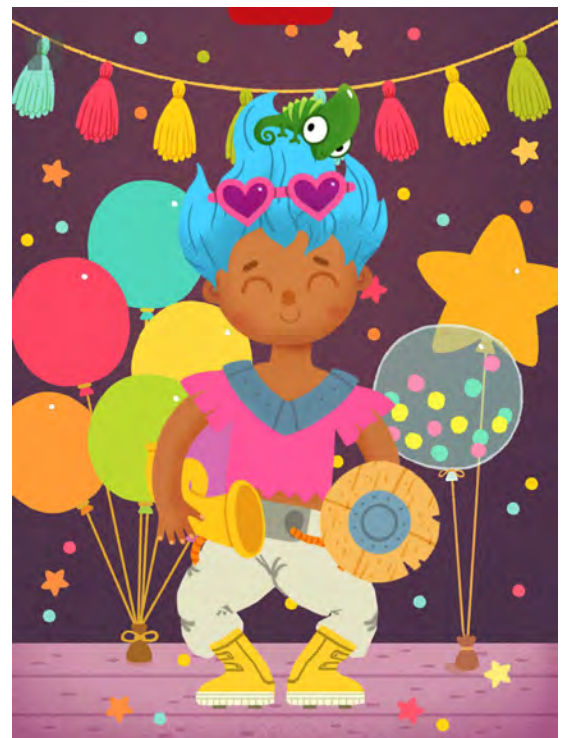
To remove a color, press the sponge in the bottom left corner, and then press the piece you want to reset back to its original color.



When your character is wearing the correct costume piece, and it's been painted the correct color, the next Costume Piece they'd like to wear will appear in the top left corner.

When all three costume pieces are in place, your character will be ready to go to the party!

Afterwards, you'll be instructed to clear your Costume Pieces off of your Character Board. Then, you'll be able to start again with a new character, and new costume pieces to prepare!



Best Practices for Effective Osmo Detection



1. Keep hands and fingers away from game pieces after placing them so that Osmo can see it.
2. Keep the reflector placed squarely in the center so the camera can see the play space.
3. Play in a well lit room, without hard shadows.
4. Make sure the reflector is clean.
5. Make sure you are using a device that is compatible with Osmo. Please check [this list of Osmo-compatible devices](#).
6. If you experience any issues despite this setup, please reach out to support@playosmo.com for assistance.

Other Questions

What do I do if I lose a piece?

Please reach out to support@playosmo.com for assistance.

Can I clean the pieces?

You can gently wipe the pieces with a damp cloth if they get dirty.